

**Date:** 12/18/08

**Current Geography Selection:** (1 Selected) States: Oklahoma

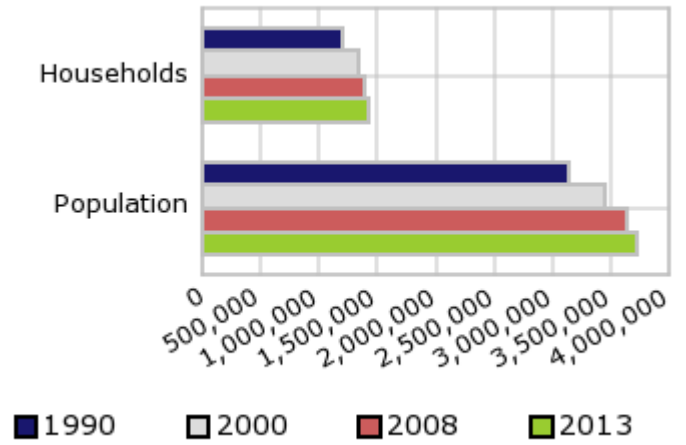
## Executive Summary Report with Charts

### Population Demographics

The number of households in the study area in 1990 was **1,206,145** and changed to **1,342,293** in 2000, representing a change of **11.3%**. The household count in 2008 was **1,399,062** and the household projection for 2013 is **1,433,468**, a change of **2.5%**.

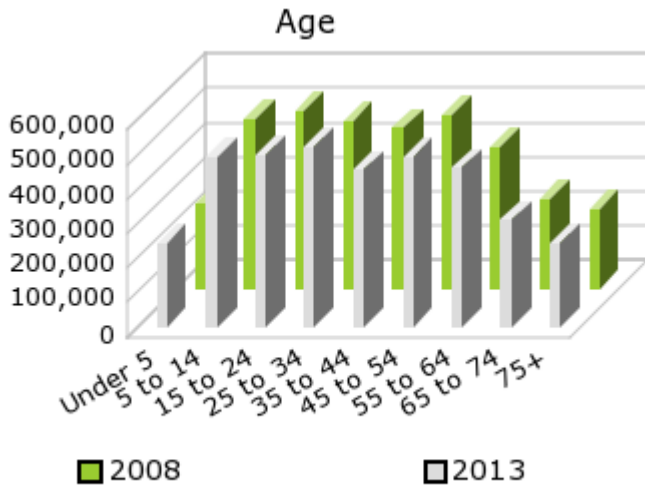
The population in the study area in 1990 was **3,145,597** and in 2000 it was **3,450,654**, roughly a **9.7%** change. The population in 2008 was **3,627,200** and the projection for 2013 is **3,735,415** representing a change of **3.0%**.

Population and Household Change



	1990 Census	2000 Census	2008 Estimate	2013 Projection	Percent Change	
					1990 to 2000	2008 to 2013
Total Population	3,145,597	3,450,654	3,627,200	3,735,415	9.7%	3.0%
Total Households	1,206,145	1,342,293	1,399,062	1,433,468	11.3%	2.5%

### Population by Age



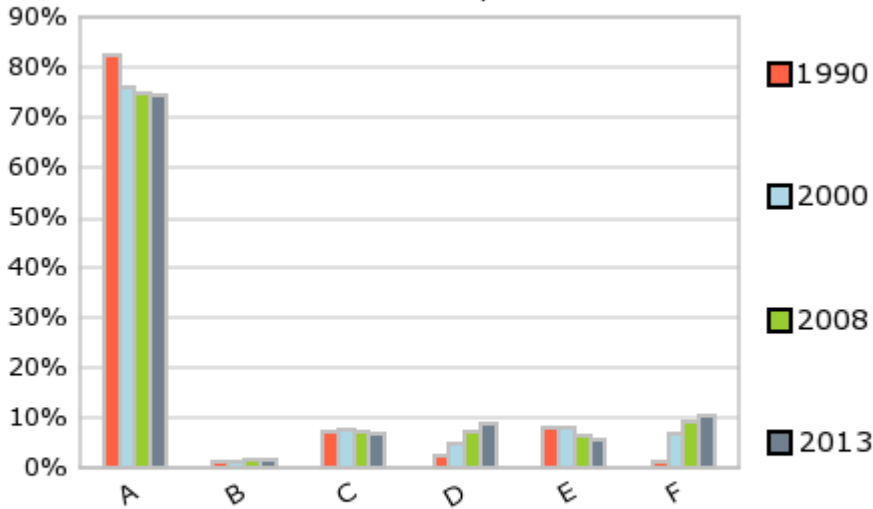
In 1990, the median age of the total population in the study area was **33.2**, and in 2000, it was **35.5**. The median age in 2008 is **36.5** and it is predicted to change in five years to **37.1** years. In 2008, females represented **50.7%** of the population with a median age of **38.1** and males represented **49.3%** of the population with a median age of **34.9** years. In 2008, the most prominent age group in this geography is **Age 45 to 54** years. The age group least represented in this geography is **75 +** years.

**Age Groups**

	1990		2000		2008		2013		Percent Change	
	Census	%	Census	%	Estimate	%	Projection	%	1990 to 2000	2008 to 2013
0 to 4	226,529	7.2%	236,353	6.9%	248,543	6.9%	247,036	6.6%	4.3%	-0.6%
5 to 14	476,024	15.1%	496,554	14.4%	492,235	13.6%	496,825	13.3%	4.3%	0.9%
15 to 19	233,096	7.4%	269,373	7.8%	253,849	7.0%	245,593	6.6%	15.6%	-3.3%
20 to 24	222,763	7.1%	247,165	7.2%	264,883	7.3%	255,112	6.8%	11.0%	-3.7%
25 to 34	509,321	16.2%	451,647	13.1%	488,440	13.5%	523,351	14.0%	-11.3%	7.1%
35 to 44	452,249	14.4%	523,522	15.2%	465,918	12.8%	456,261	12.2%	15.8%	-2.1%
45 to 54	322,984	10.3%	453,761	13.2%	506,093	14.0%	493,708	13.2%	40.5%	-2.4%
55 to 64	278,453	8.9%	316,329	9.2%	410,031	11.3%	462,269	12.4%	13.6%	12.7%
65 to 74	235,134	7.5%	242,499	7.0%	262,129	7.2%	309,339	8.3%	3.1%	18.0%
75 +	189,066	6.0%	213,451	6.2%	235,222	6.5%	245,978	6.6%	12.9%	4.6%

**Population by Race/Ethnicity**

## Race and Ethnicity Percent Composition



In 2008, the predominant race/ethnicity category in this study area is **White**. The race & ethnicity category least represented in this geography is **Asian or Pacific Islander**.

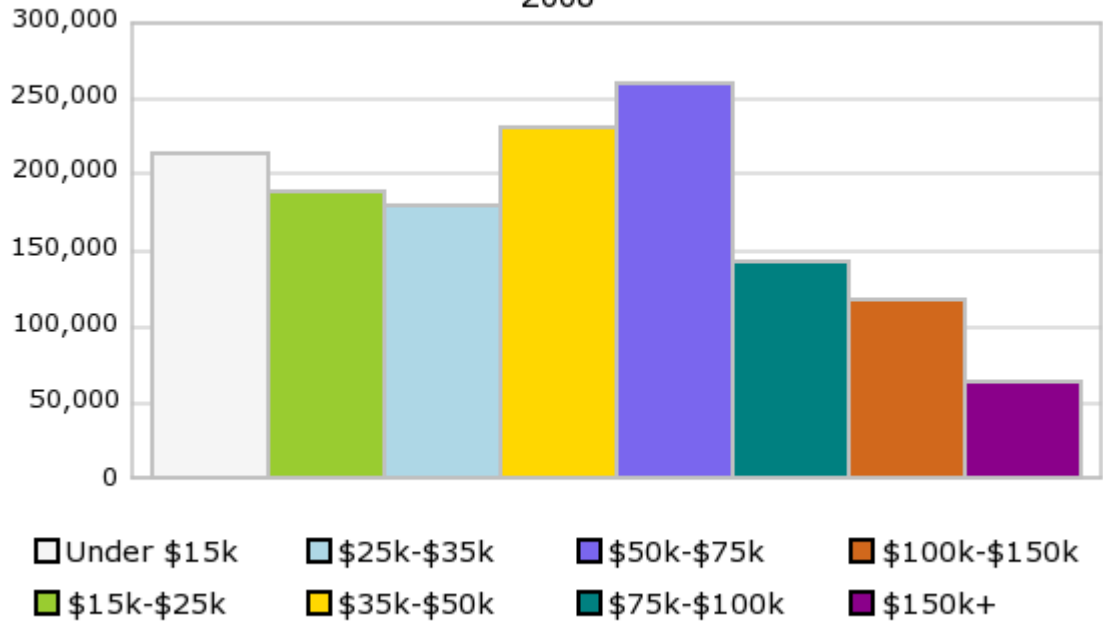
A: White  
 B: Asian Pac Islr  
 C: Black  
 D: Hispanic  
 E: Amer Indian or Alaska Native  
 F: Other or Multi Race

### Race & Ethnicity

	1990		2000		2008		2013		Percent Change	
	Census	%	Census	%	Estimate	%	Projection	%	1990 to 2000	2008 to 2013
White	2,583,520	82.1%	2,628,434	76.2%	2,724,196	75.1%	2,780,311	74.4%	1.7%	2.1%
Black	233,802	7.4%	260,968	7.6%	264,325	7.3%	266,051	7.1%	11.6%	0.7%
American Indian or Alaska Native	252,417	8.0%	273,230	7.9%	235,640	6.5%	214,514	5.7%	8.2%	-9.0%
Asian or Pacific Islander	33,557	1.1%	49,139	1.4%	67,157	1.9%	78,352	2.1%	46.4%	16.7%
Other Race	42,292	1.3%	82,898	2.4%	111,475	3.1%	143,632	3.9%	96.0%	28.8%
Two or More Races			155,985	4.5%	224,407	6.2%	252,555	6.8%		12.5%
Hispanic Ethnicity	86,162	2.7%	179,304	5.2%	270,165	7.5%	326,954	8.8%	108.1%	21.0%
Not Hispanic or Latino	3,059,423	97.3%	3,271,350	94.8%	3,357,035	92.6%	3,408,461	91.3%	6.9%	1.5%

### Households by Income

## Households by Income Group 2008



In 2008 the predominant household income category in this study area is **\$50K - \$75K**, and the income group that is least represented in this geography is **\$150K +**.

### HH Income Categories

	1990		2000		2008		2013		Percent Change	
	Census	%	Census	%	Estimate	%	Projection	%	1990 to 2000	2008 to 2013
\$0 - \$15,000	384,509	31.9%	277,289	20.7%	214,104	15.3%	194,852	13.6%	-27.9%	-9.0%
\$15,000 - \$24,999	247,412	20.5%	219,172	16.3%	189,045	13.5%	163,649	11.4%	-11.4%	-13.4%
\$25,000 - \$34,999	197,585	16.4%	200,942	15.0%	179,576	12.8%	168,911	11.8%	1.7%	-5.9%
\$35,000 - \$49,999	187,335	15.5%	230,084	17.1%	231,242	16.5%	226,200	15.8%	22.8%	-2.2%
\$50,000 - \$74,999	128,584	10.7%	228,236	17.0%	260,385	18.6%	276,428	19.3%	77.5%	6.2%
\$75,000 - \$99,999	33,042	2.7%	97,312	7.3%	143,187	10.2%	161,462	11.3%	194.5%	12.8%
\$100,000 - \$149,999	16,805	1.4%	57,969	4.3%	117,598	8.4%	151,032	10.5%	245.0%	28.4%
\$150,000 +	10,718	0.9%	31,289	2.3%	63,925	4.6%	90,934	6.3%	191.9%	42.3%
Average Hhld Income	\$30,465		\$44,438		\$55,238		\$62,387		45.9%	12.9%
Median Hhld Income	\$23,615		\$33,605		\$42,274		\$47,288		42.3%	11.9%
Per Capita Income	\$11,842		\$17,286		\$22,064		\$24,789		46.0%	12.4%

Current year data is for the year **2008**, 5 year projected data is for the year **2013**. More About Our Data.  
Demographic data © 2008 by Experian/Applied Geographic Solutions.

© 2008. DemographicsNow is brought to you by SRC, LLC.

SRC, DemographicsNow.com and the SRC and DemographicsNow.com logos are trademarks of SRC, LLC. All rights reserved.

Privacy Statement | License Agreement